

# Projet abécédaire

Classe CE1 / CE2  
Mmes FLICK et Bourdin



Lettre A  
Anas





CHAKIB

BONUS

**BOX**



*bonbon*

baby

barbe

bachelor

bien

BADIS

**BRICOLAGE**

BOXERS

BALANÇOIRE

BAIGNER

**BETON**

BALLON

**Bleu**

BAS

BUS

BROYÉS

BONBON

belgique

boire

BLEU

belle

bebe

beauté

**BRICO**

balançer

Brouette

**BOULETTES**

bonnet

BLEU

**Barcelome**



Lettre B  
Chakib



# Lettre C

## Camille





LETTRE D JAD



dessiner

dormir

DARTY

DICTEE

doudou

delta

dinosaur

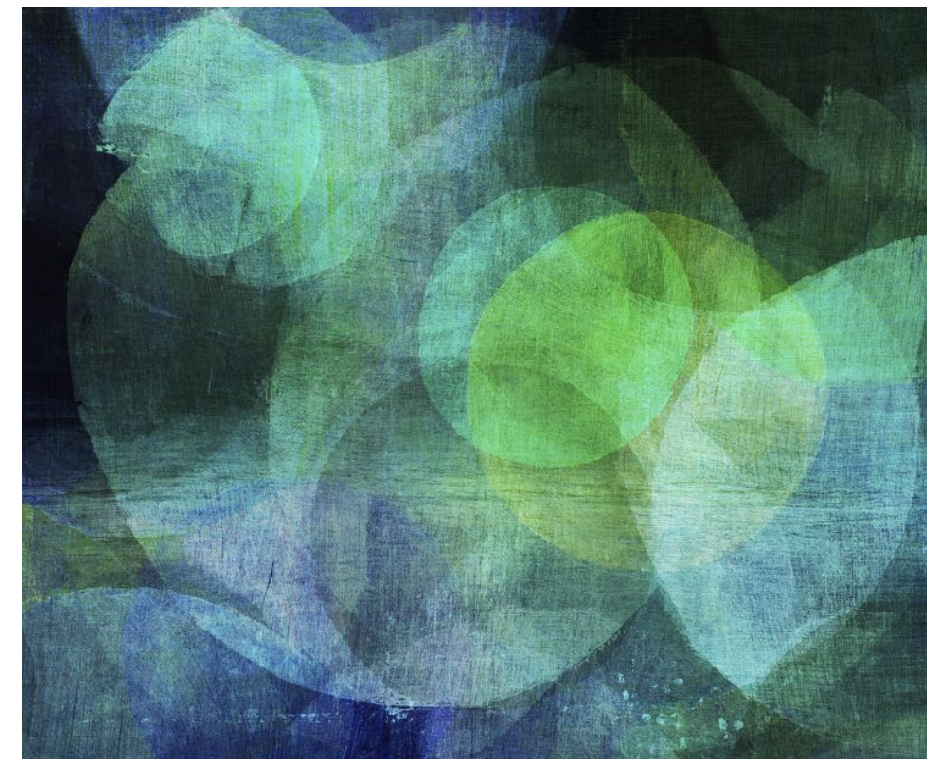
dessin

*diplodocus*





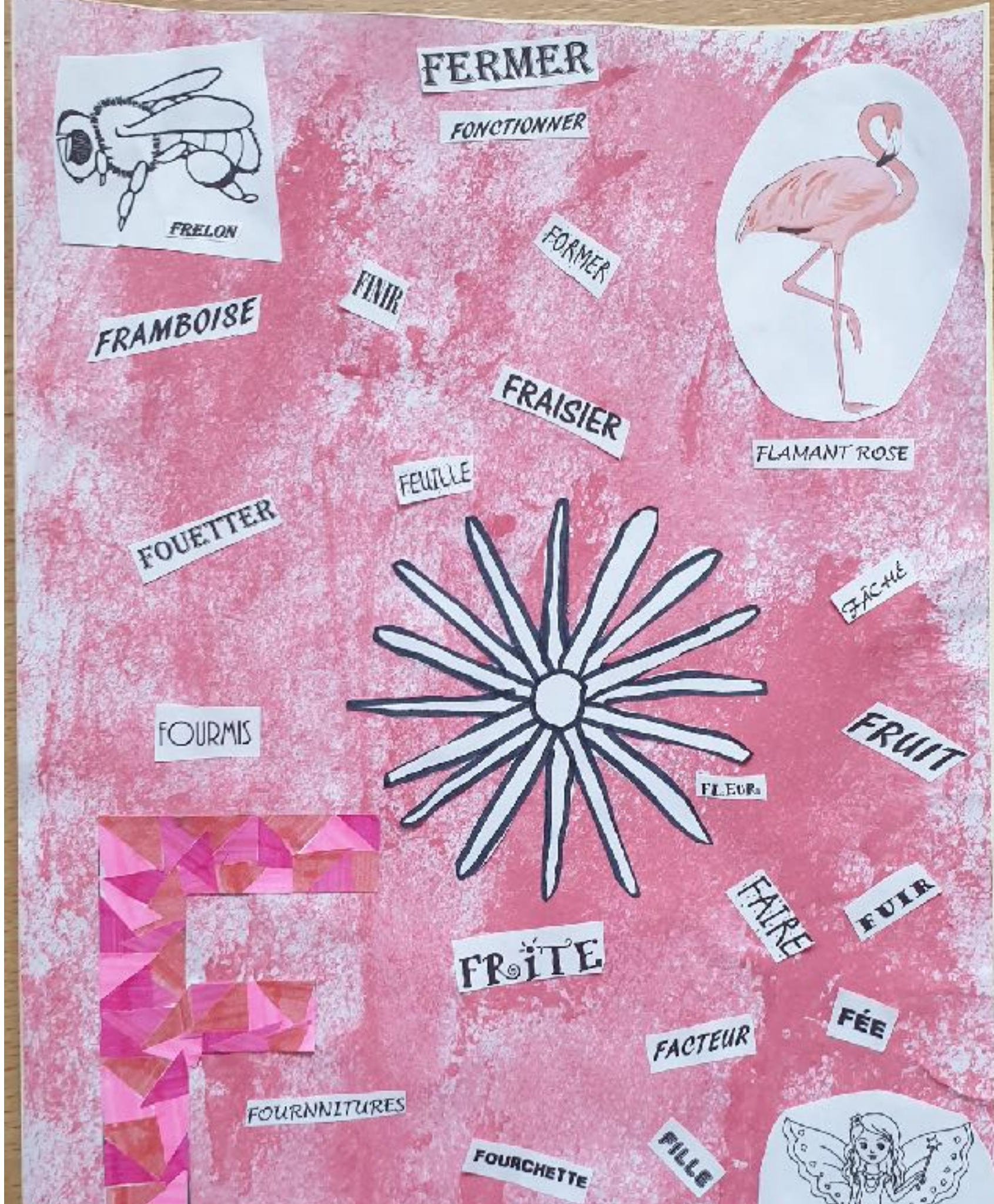
Lettre E  
Juliette





# Lettre F

## Léna







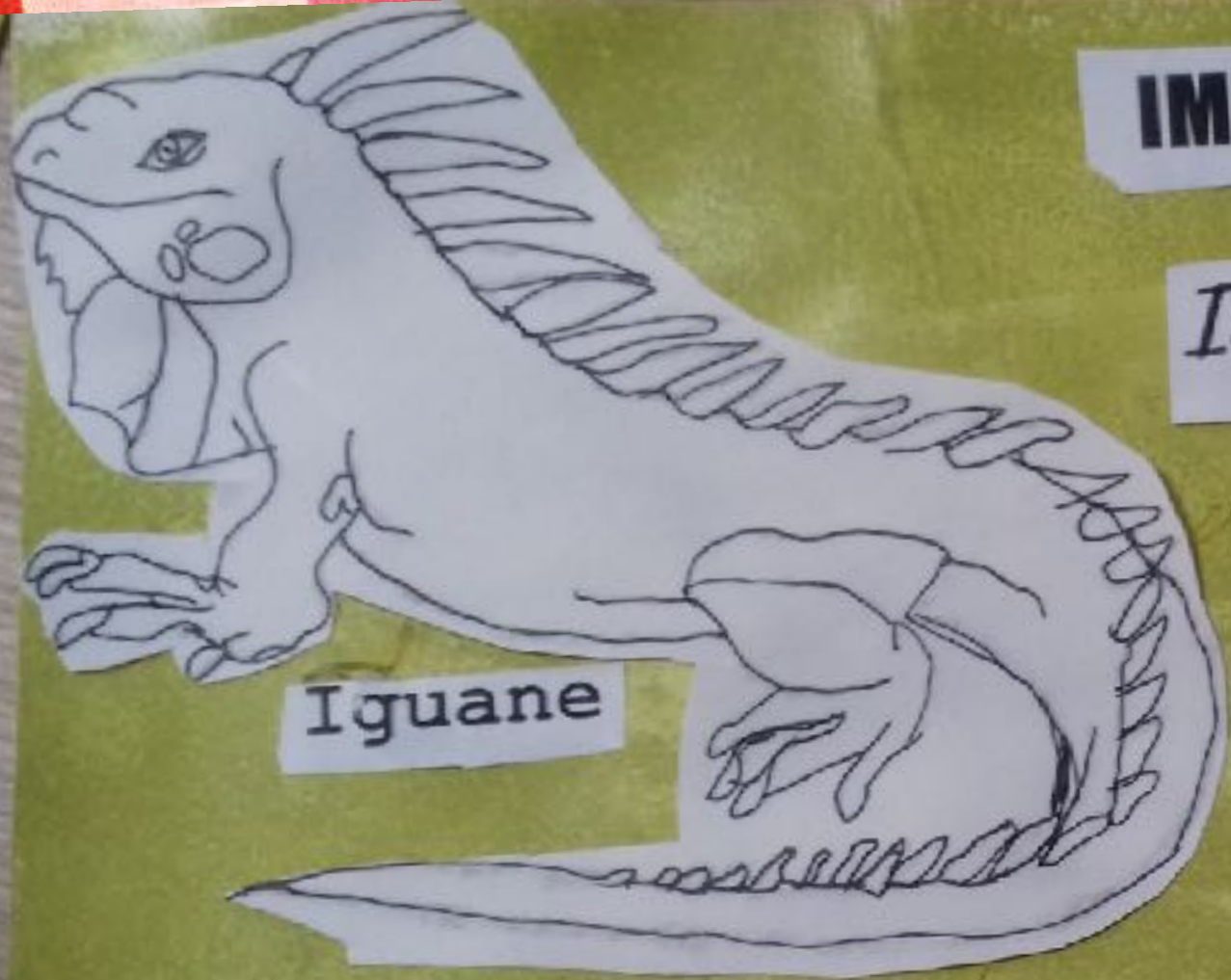
**Lettre G**  
**Garance**



Lettre H  
Thomas







Iguane

**IMPORTANT**

IGNORER

Intelligent

**IBIS ROUGE**

**IMPACT**

ITALIE

**Idée**

Illusion



IRAN

**Iceberg**



Lettre I

Tristan



# LETTRE J

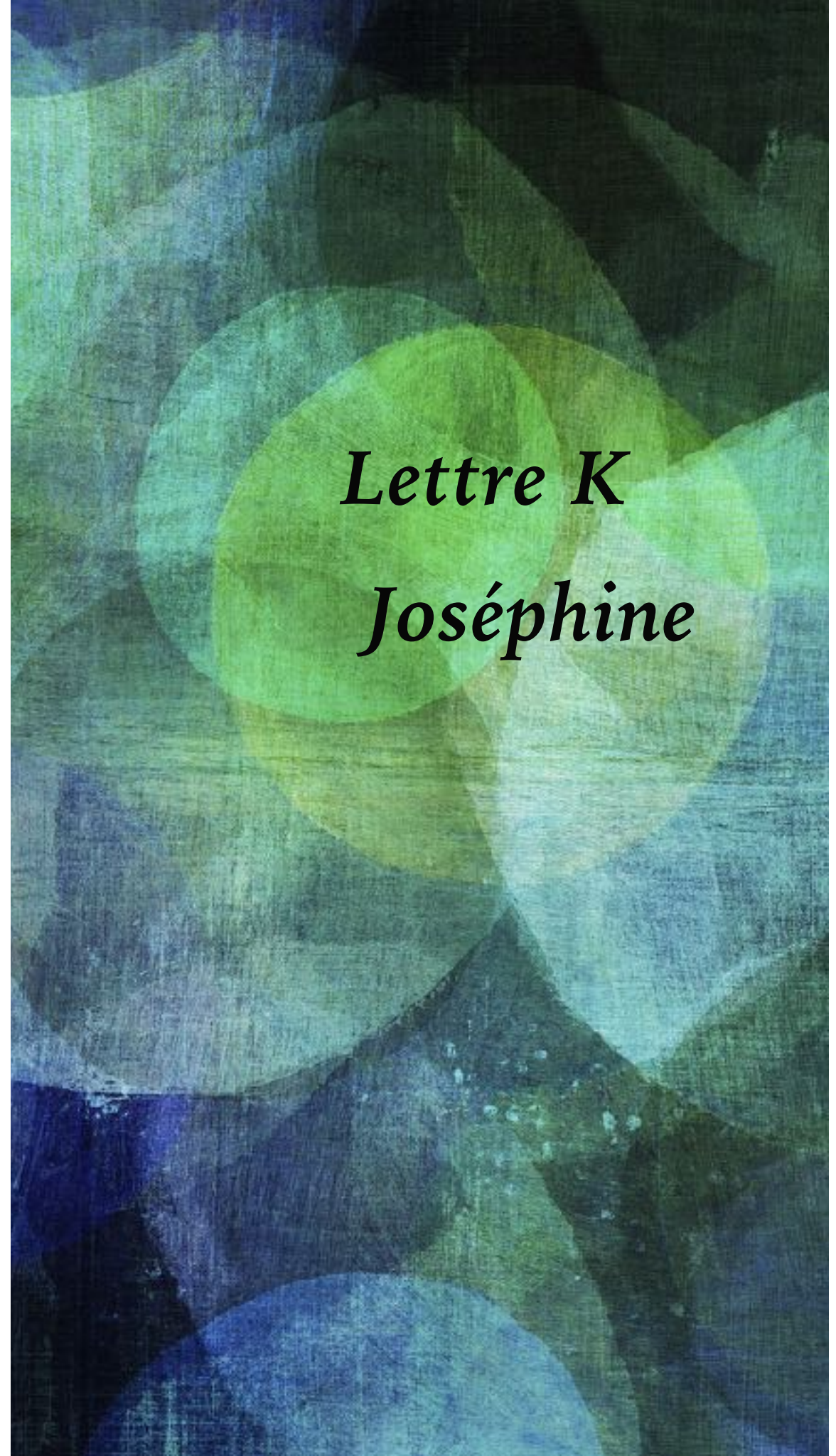
JOSEPHINE







*Lettre K*  
*Joséphine*













# Lettre N

## Nora



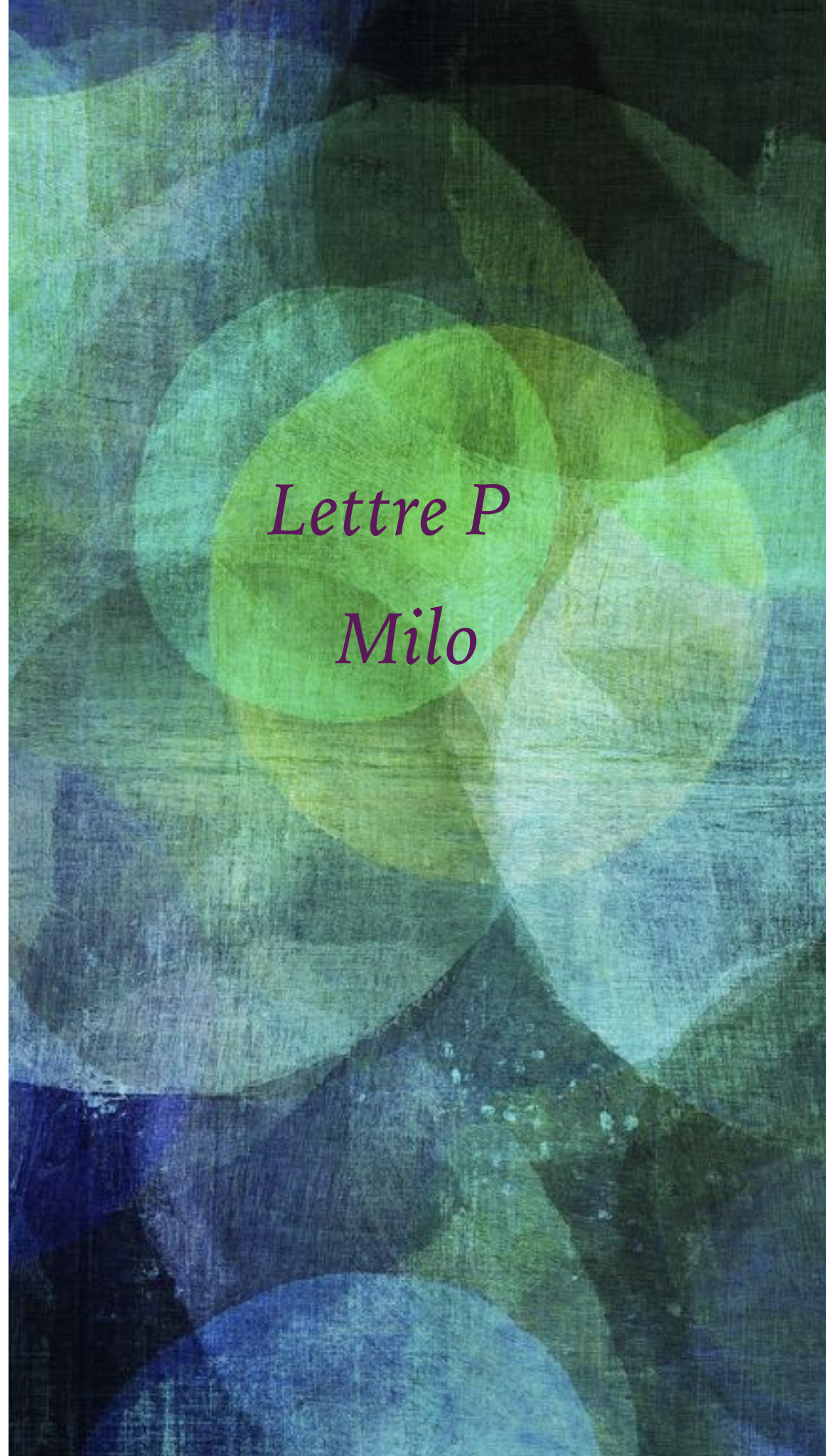


*Lettre O*

*Léo*







Lettre P  
Milo



Q

Quentin

Quitter qu'il  
quel  
la scène  
Que s'est-il passé?

Question ?

quetche

quatre

4



QUARTZ



Q



Lettre Q  
Quentin



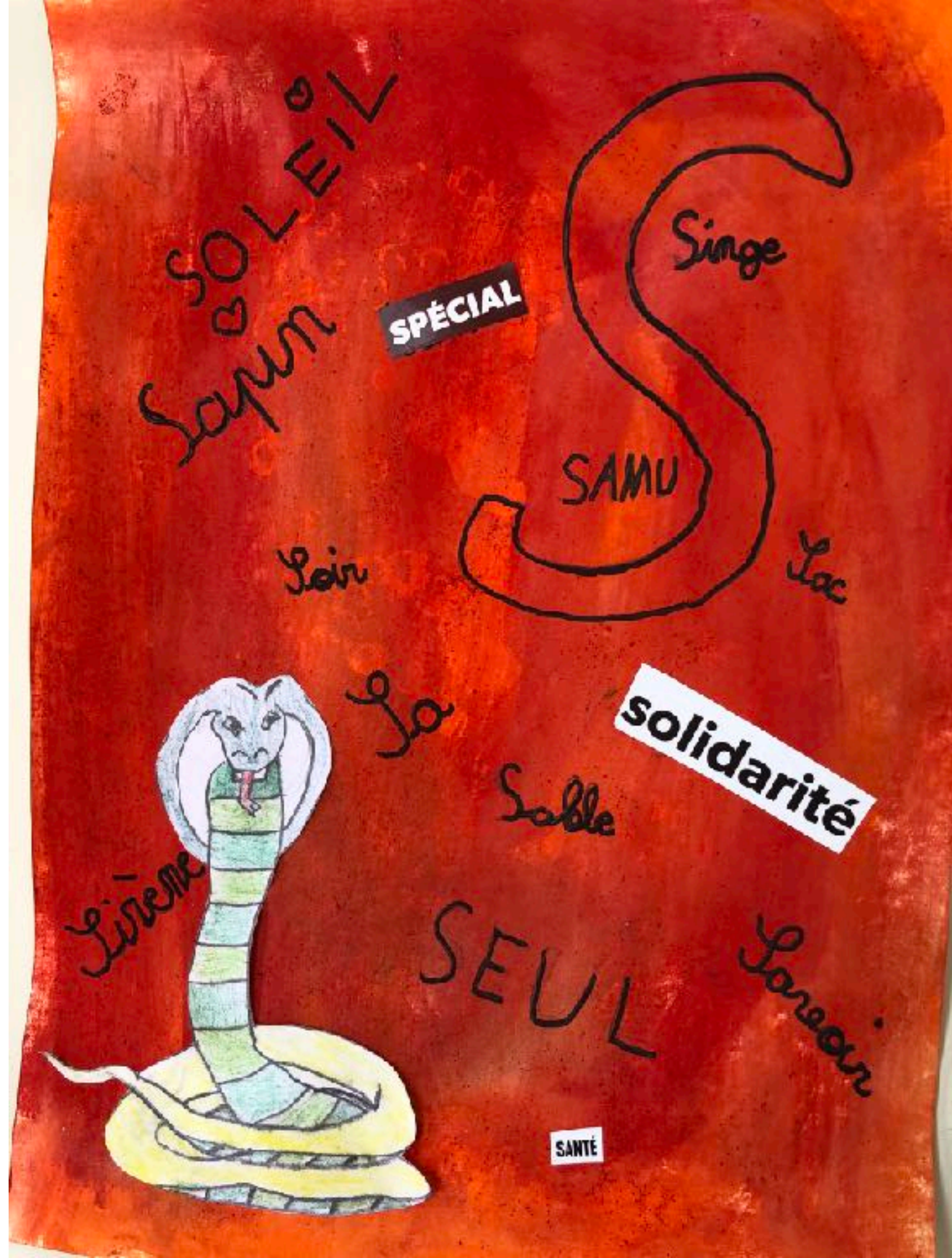


*Lettre R*

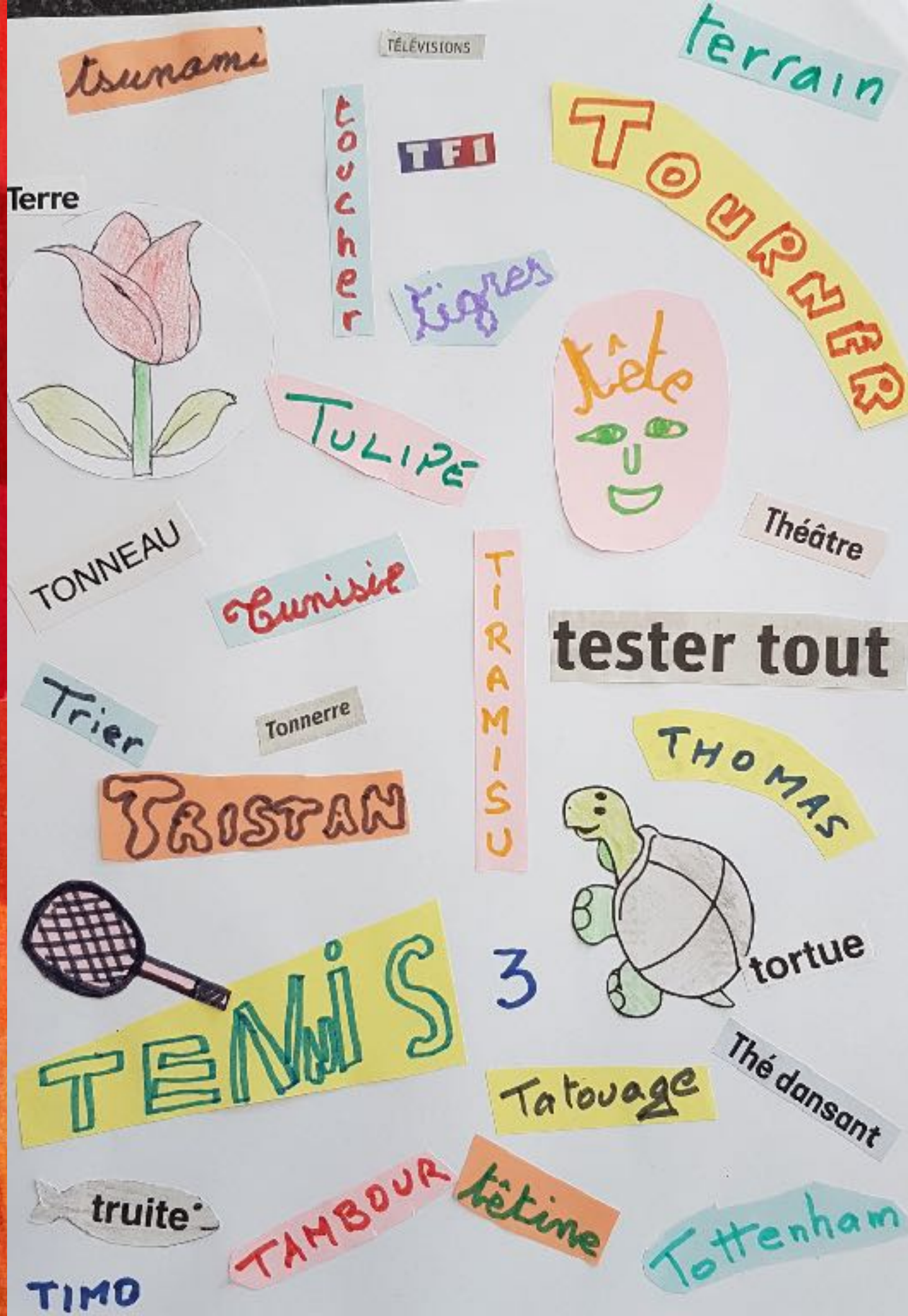
*Rokia*



Lettre S  
Mélis Luna







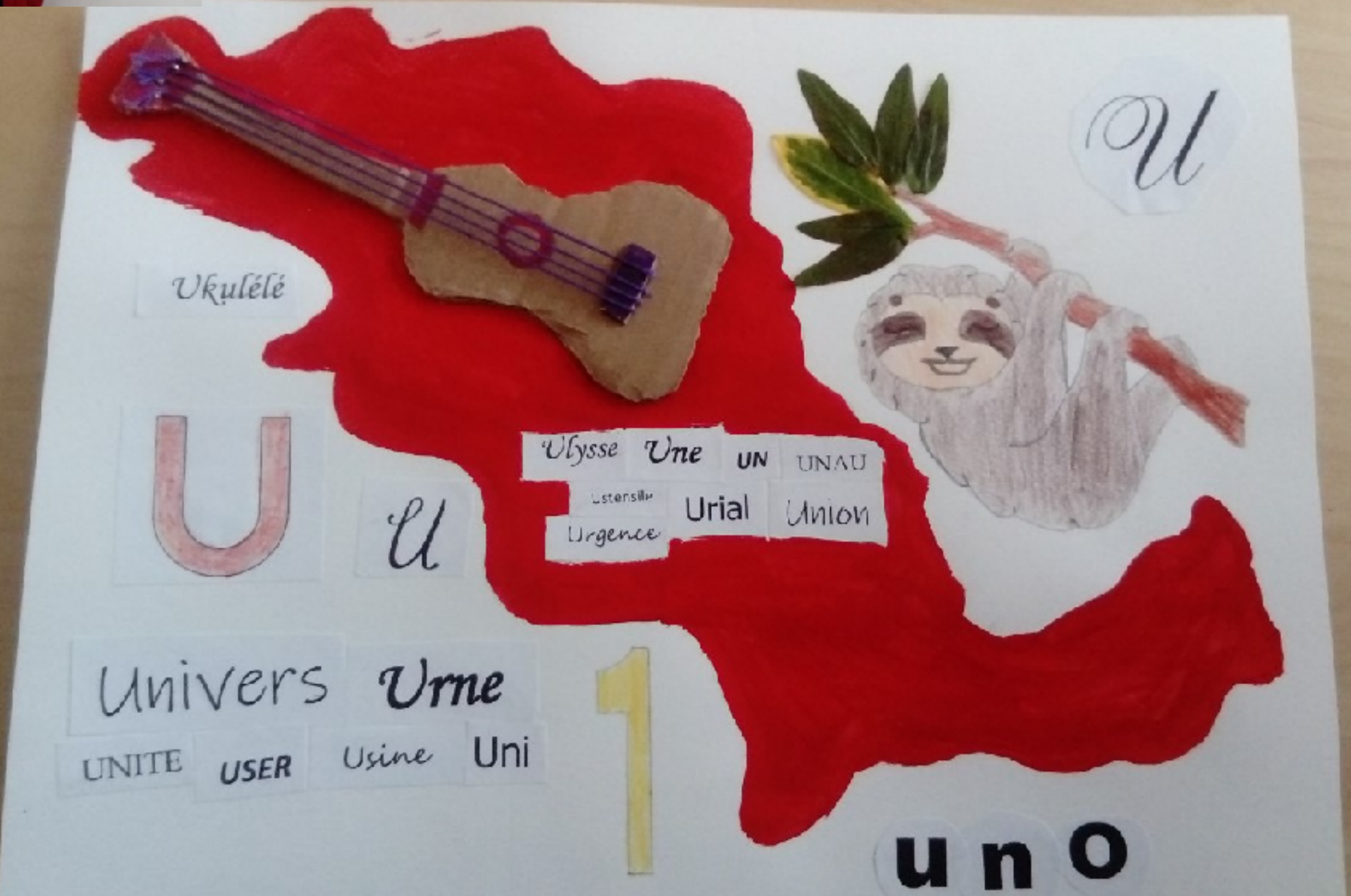
*Lettre T*

*Timo*



# Lettre U

## Lucie





Lettre V



André



*Lettre W*

*Marie*







*Lettre X*  
*Anaë-Lee*





*Lettre Y*  
*Julyana*



# *Lettre Z*

*Azé*

